

Kenton C. Ward, CFM
Surveyor of Hamilton County
Phone (317) 776-8495
Fax (317) 776-9628

Suite 188
One Hamilton County Square
Noblesville, Indiana 46060-2230

December 13, 2010

TO: Hamilton County Drainage Board

RE: Village of West Clay Drain, Section 10010B Arm.

Attached is a petition filed by Pulte Homes of Indiana, LLC., along with a non-enforcement request, plans, calculations, quantity summary and assessment roll for the Section 10010B Arm, Village of West Clay Drain to be located in Clay Township. I have reviewed the submittals and petition and have found each to be in proper form.

I have made a personal inspection of the land described in the petition. Upon doing so, I believe that the drain is practicable, will improve the public health, benefit a public highway, and be of public utility and that the costs, damages and expenses of the proposed drain will probably be less than the benefits accruing to the owners of land likely to be benefited. The drain will consist of the following:

12" RCP	767 ft.	18" RCP	288 ft.
15" RCP	106 ft.	6" SSD	1,420 ft.

This proposal will add an additional 2,581 feet to the drains total length

The subsurface drains (SSD) under curbs are not to be part of the regulated drain. This is per the agreement between Brenwick Development and the Hamilton County Commissioners on April 26, 1999. (See Commissioner's Minute Book 93, Pages 565-566). Only the main SSD lines which are located within the easements are to be maintained as regulated drain. Laterals for individual lots will not be considered part of the regulated drain. The portions of the SSD which will be regulated are as follows:

From Str. 634 to Str. 633 in the rear yard of lots 1028, 1027, and 1026.
From Str. 634 running North in the rear yard of lot 1025.
From Str. 629 running East in the rear yard of lots 1013 and 1014.
From Str. 647 to Str. 648 in the rear yards of lots 1015, 1016, and 1017.

From Str. 648 to Str. 601 in the rear yard of lots 1018, 1019, and 1020.
From Str. 601 running East in the rear yard of lots 1020, 1021, 1022, 1023, and 1024.

I have reviewed the plans and believe the drain will benefit each lot equally. Therefore, I recommend each lot be assessed equally. I also believe that no damages will result to landowners by the construction of this drain. I recommend a maintenance assessment of \$5.00 per acre, \$5.00 per acre for roadways, with a \$120.00 minimum. With this assessment the total annual assessment for this drain/this section will be \$2,177.56.

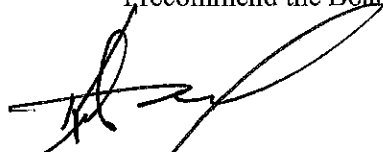
The petitioner has not submitted surety for the proposed drain at this time. Surety shall be submitted prior to the commencement of construction of Section 10010-B.

Parcels assessed for this drain will also be assessed for the J.W. Brendle Drain.

I believe this proposed drain meets the requirements for Urban Drain Classification as set out in IC36-9-27-67 to 69. Therefore, this drain shall be designated as an Urban Drain.

I recommend that upon approval of the above proposed drain that the Board also approve the attached non-enforcement request. The request is for the reduction of the regulated drain easement to those easement widths as shown on the secondary plat for Village of West Clay Section 10010-B as recorded in the office of the Hamilton County Recorder.

I recommend the Board set a hearing for this proposed drain for January 24, 2011.



Kenton C. Ward, CFM
Hamilton County Surveyor

KCW/pll

STATE OF INDIANA)
)
COUNTY OF HAMILTON)

TO: HAMILTON COUNTY DRAINAGE BOARD
% Hamilton County Surveyor
One Hamilton County Square, Suite 188
Noblesville, IN. 46060-2230

In the matter of _____ the Village of WestClay _____ Subdivision, Section
10010-B _____ Drain Petition.

Petitioner is the owner of all lots in the land affected by the proposed new regulated drain. The drainage will affect various lots in Village of West Clay Section 10010-B, a subdivision in Hamilton County, Indiana. The general route of such drainage shall be in existing easements and along public roads as shown in the plans on file in the Surveyor's Office.

Petitioner believes that the cost, damages and expenses of the proposed improvement will be less than the benefits which will result to the owners of the land likely to be benefited thereby. Petitioner believes the proposed improvements will:

- (a) improve public health
- (b) benefit a public street
- (c) be of public utility

Petitioner agrees to pay the cost of construction of the drainage system and requests periodic maintenance assessments by the Board thereafter.

The Petitioner also agrees to the following:

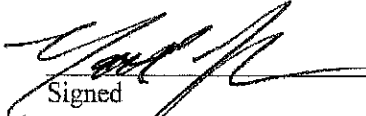
1. To provide the Drainage Board a Performance Bond or Non-Revocable Letter of Credit for the portion of the drainage system which will be made a regulated drain. The bond will be in the amount of 120% of the Engineer's estimate. The bond will be in effect until construction of 100% of the system is completed and so certified by the Engineer.
2. The Petitioner shall retain an Engineer throughout the construction phase. At completion of the project the Petitioner's Engineer shall certify that the drainage system which is to be maintained as a regulated drain has been constructed as per construction plans.
3. The Petitioner agrees to request in writing to the County Surveyor any changes from the approved plan and must receive written authorization from the County Surveyor prior to implementation of the change. All changes shall be documented and given to the Surveyor to be placed in the Drain file.
4. The Petitioner shall instruct his Engineer to provide a reproducible print on a 24" x 36" Mylar of the final design of the Drainage System. This shall be submitted to the County Surveyor prior to the release of the Performance Bond.
5. The Petitioner shall comply with the Erosion Control Plan as specified on the construction plans. Failure to comply with the Erosion Control Plan shall be determined by the Board as being an obstruction to the drainage system. The County Surveyor shall immediately install or repair the needed measures at Petitioners cost as per IC 36-9-27-46.

SEP 03 2010

OFFICE OF HAMILTON COUNTY SURVEYOR

The Petitioner further requests that the Drain be classified as an Urban Drain as per IC 36-9-27-69(d).

RECORDED OWNER(S) OF LAND INVOLVED


Signed

Signed

ALAN D. LOOMIS; PUBLIC HEARS OF INDIANA
Printed Name

Printed Name

8/27/10
Date

Date

Signed

Signed

Printed Name

Printed Name

Date

Date

FINDINGS AND ORDER

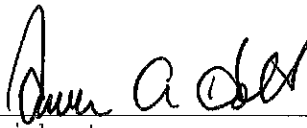
CONCERNING THE MAINTENANCE OF THE

Village of West Clay Drain, Section 10010B Arm

On this **24th day of January, 2011**, the Hamilton County Drainage Board has held a hearing on the Maintenance Report and Schedule of Assessments of the **Village of West Clay Drain, Section 10010B Arm**.

Evidence has been heard. Objections were presented and considered. The Board then adopted the original/amended Schedule of Assessments. The Board now finds that the annual maintenance assessment will be less than the benefits to the landowners and issues this order declaring that this Maintenance Fund be established.

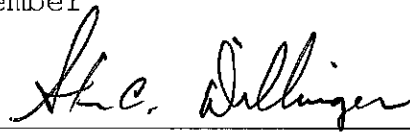
HAMILTON COUNTY DRAINAGE BOARD



President



Member



Member

Attest: 

BEFORE THE HAMILTON COUNTY DRAINAGE BOARD
IN THE MATTER OF THE

Village of West Clay Drain Section 10010-B Arm

NOTICE

Notice is hereby given pursuant to Section 405 of the 1965 Indiana Drainage Code that this Board, prior to final adjournment on **January 24, 2011** has issued an order adopting the Schedule of Assessments, filed the same and made public announcement thereof at the hearing and ordered publication. If judicial review of the findings and order of the Board is not requested pursuant to Article Eight of this code within twenty (20) days from the date of this publication, the order shall be conclusive.

Hamilton County Drainage Board

Attest: Lynette Mosbaugh

ONE TIME ONLY

CERTIFICATE OF COMPLETION AND COMPLIANCE

To: Hamilton County Surveyor

Re: VILLAGE OF WEST CLAY SECTION 10010-B

I hereby certify that:

1. I am a Registered ~~Land Surveyor or~~ Engineer in the State of Indiana.
2. I am familiar with the plans and specifications for the above referenced subdivision.
3. I have personally observed and supervised the completion of the drainage facilities for the above referenced subdivision.
4. The drainage facilities within the above referenced subdivision to the best of my knowledge, information and belief have been installed and completed in conformity with all plans and specifications.
5. The drainage facilities within the above referenced subdivision to the best of my knowledge, information and belief have been correctly represented on the Record Drawings, Digital Record Drawings and the Structure Data Spreadsheet.

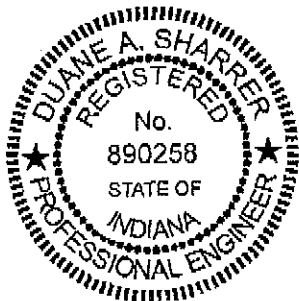
Signature:  Date: January 23, 2012

Type or Print Name: Duane A. Sharrer, P.E.

Business Address: The Schneider Corp.

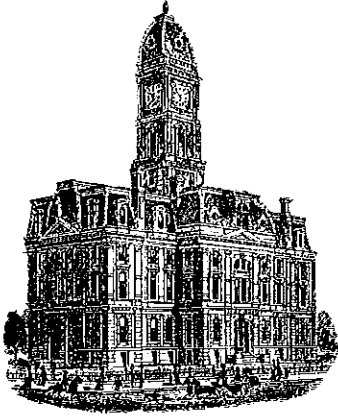
8901 Otis Avenue, Indianapolis, IN 46216

Telephone Number: 317.826.7302



INDIANA REGISTRATION NUMBER

890258



Kenton C. Ward, CFM
Surveyor of Hamilton County
Phone (317) 776-8495
Fax (317) 776-9628

Suite 188
One Hamilton County Square
Noblesville, Indiana 46060-2230

To: **Hamilton County Drainage Board**

December 12, 2012

Re: Village of West Clay: Section 10010B Arm

Attached are as-builts, certificate of completion & compliance, and other information for Village of West Clay Section 10010B. An inspection of the drainage facilities for this section has been made and the facilities were found to be complete and acceptable.

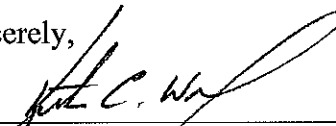
During construction, changes were made to the drain, which will alter the plans submitted with my report for this drain-dated December 13, 2010. The report was approved by the Board at the hearing held January 24, 2011. (See Drainage Board Minutes Book 13, Pages 243-244) The changes are as follows:
The 12" RCP was lengthened from 767 feet to 771 feet. The 15" RCP was lengthened from 106 feet to 110 feet. The 18" RCP was shortened from 288 feet to 285 feet. The 6" SSD was lengthened from 1,420 feet to 1,423 feet. The length of the drain due to the changes described above is now **2,589 feet**.

The non-enforcement was approved by the Board at its meeting on January 24, 2011 and recorded under instrument #2012009886. The following sureties were guaranteed by RLI Insurance Company and released by the Board on its January 14, 2013 meeting.

Bond-LC No: CMS259155
Insured For: Storm Sewers
Amount: \$73,807.00
Issue Date: September 13, 2011

I recommend the Board approve the drain's construction as complete and acceptable.

Sincerely,



Kenton C. Ward, CFM
Hamilton County Surveyor

KCW/slm

VILLAGE OF WESTCLAY SECTIONS

~~10010-A~~ & 10010-B

(CONSTRUCTION PLANS)

HAMILTON COUNTY CARMEL, INDIANA

DEVELOPER:

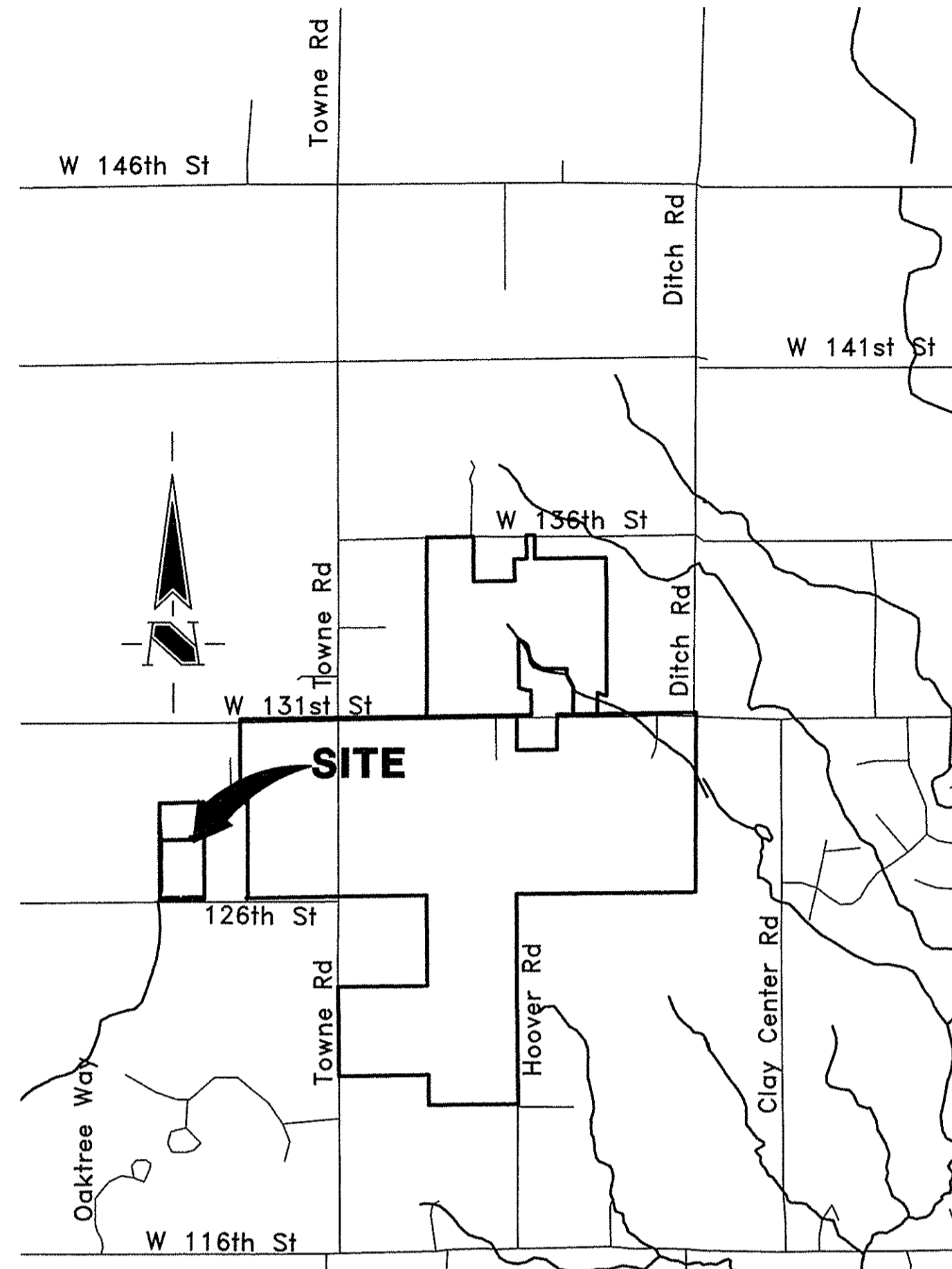
PULTE HOMES OF INDIANA, LLC

11590 N. MERIDIAN STREET, SUITE 530
INDIANAPOLIS, INDIANA 46032

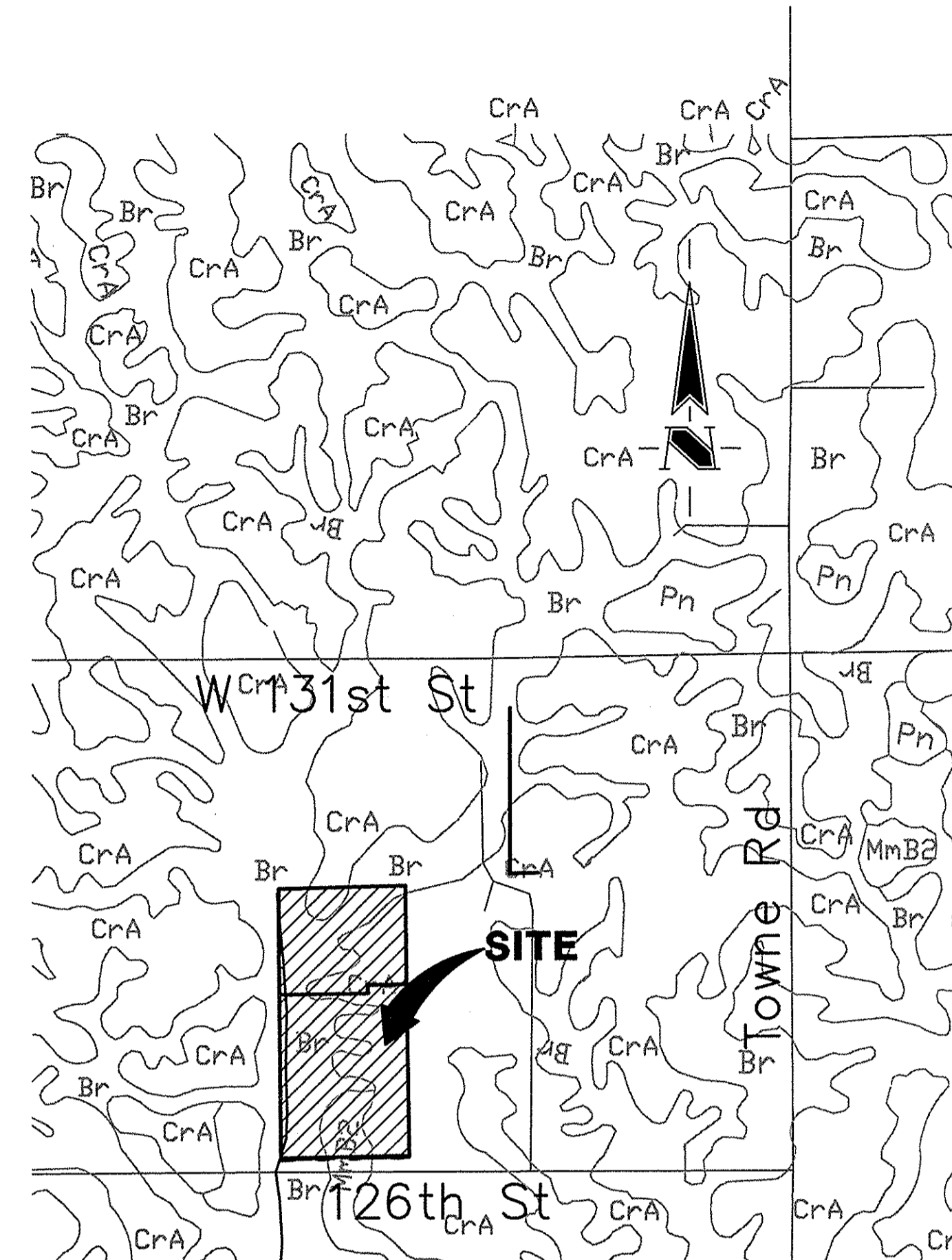
13171 575-2350

13171 575-2355 FAX

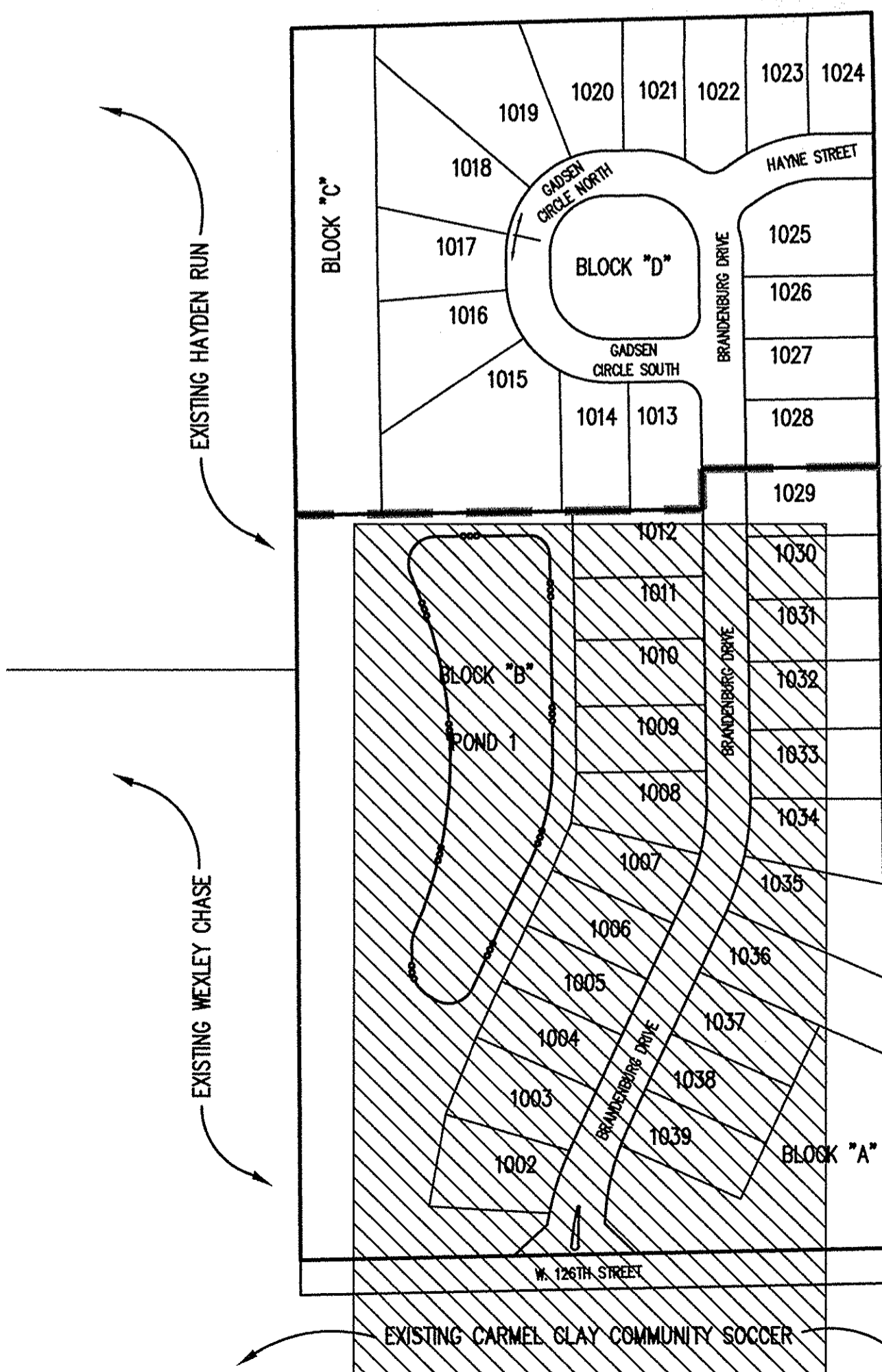
MATT LOHMEYER - E-MAIL: matthew.lohmeyer@pulte.com



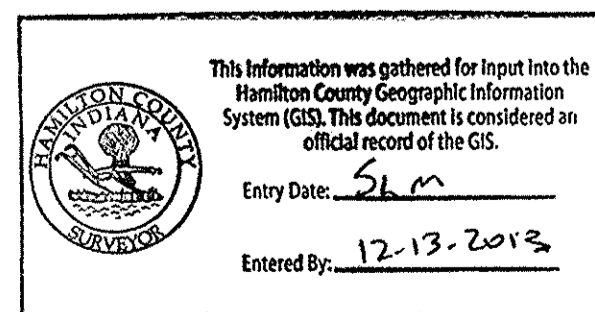
AREA MAP
NOT TO SCALE



SOILS MAP
NOT TO SCALE



SITE MAP
SCALE: 1"=150'



VILLAGE OF WESTCLAY SECTION 10010-A LAND DESCRIPTION

Part of the Southeast Quarter of Section 29, Township 18 North, Range 3 East of the Second Principal Meridian, Clay Township, Hamilton County, Indiana, more particularly described as follows:

Commencing at the Southwest Corner of said Southeast Quarter Section; thence North 00 degrees 24 minutes 33 seconds West (Assumed Bearing) along the West line of said Southeast Quarter a distance of 40.00 feet to a point on the north right-of-way line of East 126th Street, to the Point of Beginning, thence continuing North 00 degrees 24 minutes 33 seconds West along said West line a distance of 848.76 feet; thence North 89 degrees 13 minutes 34 seconds East a distance of 462.38 feet; thence North 00 degrees 46 minutes 26 seconds West a distance of 45.46 feet; thence North 89 degrees 13 minutes 34 seconds East a distance of 200.00 feet; thence South 00 degrees 46 minutes 26 seconds East a distance of 889.84 feet to the north right-of-way line of said East 126th Street; thence South 88 degrees 51 minutes 10 seconds West along said right-of-way line a distance of 667.79 feet to the Point of Beginning. Containing 13.134 acres, more or less.

VILLAGE OF WESTCLAY SECTION 10010-B LAND DESCRIPTION

Part of the Southeast Quarter of Section 29, Township 18 North, Range 3 East of the Second Principal Meridian, Clay Township, Hamilton County, Indiana, more particularly described as follows:

Commencing at the Southwest Corner of said Southeast Quarter Section; thence North 00 degrees 24 minutes 33 seconds West (Assumed Bearing) along the West line of said Southeast Quarter Section a distance of 888.76 feet to the Point of Beginning, thence continuing North 00 degrees 24 minutes 33 seconds West along said West line a distance of 548.63 feet; thence North 88 degrees 29 minutes 35 seconds East a distance of 658.94 feet; thence South 00 degrees 46 minutes 26 seconds East a distance of 511.60 feet; thence South 89 degrees 13 minutes 34 seconds West a distance of 200.00 feet; thence South 00 degrees 46 minutes 26 seconds East a distance of 45.46 feet; thence South 89 degrees 13 minutes 34 seconds West a distance of 462.38 feet to the Point of Beginning. Containing 8.176 acres, more or less.

EXISTING ZONING = Z-465-04

ROADWAY DESIGN SPEED = 20MPH

STORM SEWER WATER LINE GRADING SANITARY SEWER RECORD DRAWING

INDEX	
SHEET No.	DESCRIPTION
C100	COVER SHEET
C101-C102	DEVELOPMENT PLAN
C103-C104	PRE-CONSTRUCTION STORMWATER POLLUTION PREVENTION PLAN
C105-C106	STORMWATER POLLUTION PREVENTION PLAN
C107	TRAFFIC CONTROL PLAN
C201-C202	STREET PLAN & PROFILES
C301	INTERSECTION DETAILS
C302	ENTRANCE PLAN & MAINTENANCE OF TRAFFIC PLAN
C401-C402	SANITARY SEWER PLAN AND PROFILES
C601-C604	STORM SEWER PLAN AND PROFILES
C701-C702	WATER DISTRIBUTION PLAN
C703	WATER DETAILS AND SPECIFICATIONS
C801-C803	GENERAL DETAILS
C804-C805	STORMWATER POLLUTION PREVENTION DETAILS AND SPECIFICATIONS
C806	WATER ENTRY DETAILS
C901	SPECIFICATIONS
C902	CARMEL SPECIFICATIONS

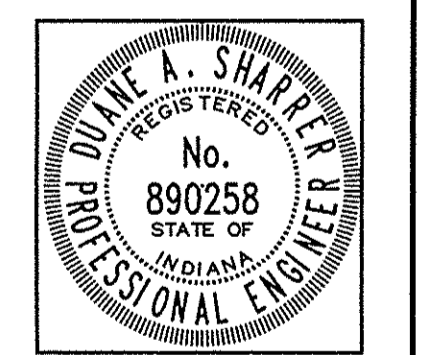


The Schneider Corp.
Historic Fort Harrison
8901 Otis Avenue
Indianapolis, Indiana 46123
317-826-7100
317-826-7200 Fax
www.schneidercorp.com

Architecture
Civil Engineering
Environmental Engineering
Geotechnical Services
GIS * LIS
Home Builder Services
Interior Design
Land Surveying
Landscape Architecture
Transportation Engineering

CERTIFICATION FOR "RECORD DRAWING"

CERTIFIED BY: Duane A. Sharrer
THE SCHNEIDER CORPORATION
8901 OTIS AVENUE
INDIANAPOLIS, IN 46216
(317) 826-7100 FAX (317) 826-7200

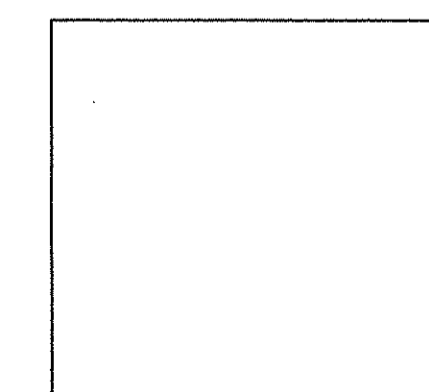


NOTE:

FILED

JAN 25 2012

OFFICE OF HAMILTON COUNTY SURVEYOR



DATE: 07/19/2010

DATE	BY	DESCRIPTION
08/25/10	DCC	ALL SHEETS, TAC COMMENTS
09/02/10	DCC	ALL SHEETS, TAC COMMENTS
09/09/10	DCC	C100, C105, C106, C804 PER TAC COMMENTS
09/13/10	DCC	C101, C102, C302 PER TAC COMMENTS
09/16/10	DCC	C100, C401, C402, C701 & C702
09/22/10	DCC	C100, C101, C105, C106, C601 & C806
10/07/10	DCC	ALL SHEETS
10/14/10	DCC	C100, C101, C401
01/19/12	DTR	C100, C101, C402

CERTIFIED BY: DAVID K. SEXTON
E-MAIL ADDRESS: dsexton@schneidercorp.com

PROJECT ENGINEER: TPG

CHECKED BY: DKS DATE CHECKED: 07/15/2010

© 2010, The Schneider Corporation

JOB No. 1238.1010A

STORM STRUCTURE DATA TABLE

STRUCTURE NAME:	DETAILS:	PIPES IN:	PIPES OUT
601	End Section TC ELEV. = N/A	18" RCP INV IN = 894.70	
602	Storm Manhole TC ELEV. = 901.40	18" RCP INV IN = 895.07 12" RCP INV IN = 895.07	18" RCP INV OUT = 894.97
603	Storm Manhole TC ELEV. = 907.45		18" RCP INV OUT = 896.04
604	VotSantry Structure TC ELEV. = 901.10	12" RCP INV IN = 895.24	12" RCP INV OUT = 895.24
606	Outlet Control Structure TC ELEV. = 899.00	6" INV IN = 896.00	12" RCP INV OUT = 896.00
607	End Section TC ELEV. = N/A		6" INV OUT = 896.00
609	End Section TC ELEV. = 898.96	15" RCP INV IN = 897.00	
610	Beehive Inlet TC ELEV. = 899.80	15" RCP INV IN = 897.20	15" RCP INV OUT = 897.10
611	Storm Manhole TC ELEV. = 901.40	15" RCP INV IN = 897.62	15" RCP INV OUT = 897.52
612	Curb Inlet TC ELEV. = 901.00	12" RCP INV IN = 897.79	15" RCP INV OUT = 897.69
613	Curb Inlet TC ELEV. = 901.00	12" RCP INV IN = 897.99	12" RCP INV OUT = 897.89
614	Beehive Inlet TC ELEV. = 901.10		12" RCP INV OUT = 898.07
616	End Section TC ELEV. = N/A	18" RCP INV IN = 896.00	
617	Storm Manhole TC ELEV. = 905.30	12" RCP INV IN = 899.88 15" RCP INV IN = 897.69	18" RCP INV OUT = 897.44
618	Curb Inlet TC ELEV. = 904.41	12" RCP INV IN = 900.23	12" RCP INV OUT = 900.13
619	Curb Inlet TC ELEV. = 904.41	12" RCP INV IN = 900.51	12" RCP INV OUT = 900.41
620	Beehive Inlet TC ELEV. = 905.10		12" RCP INV OUT = 901.43
622	Storm Manhole TC ELEV. = 905.40	15" RCP INV IN = 898.43	15" RCP INV OUT = 898.33
623	Storm Manhole TC ELEV. = 904.80	15" RCP INV IN = 898.85	15" RCP INV OUT = 898.75
624	Curb Inlet TC ELEV. = 904.04	12" RCP INV IN = 899.26	15" RCP INV OUT = 899.01
625	Curb Inlet TC ELEV. = 904.04	12" RCP INV IN = 899.55	12" RCP INV OUT = 899.45
626	Beehive Inlet TC ELEV. = 903.90		12" RCP INV OUT = 900.23
628	End Section TC ELEV. = N/A	18" RCP INV IN = 896.00	
629	Beehive Inlet TC ELEV. = 900.80	15" RCP INV IN = 897.38 18" RCP INV IN = 897.13	18" RCP INV OUT = 897.03
630	Storm Manhole TC ELEV. = 904.80	15" RCP INV IN = 898.43	15" RCP INV OUT = 898.33
631	Curb Inlet TC ELEV. = 904.00	12" RCP INV IN = 898.93	15" RCP INV OUT = 898.68
632	Curb Inlet TC ELEV. = 904.00	12" RCP INV IN = 899.28	12" RCP INV OUT = 899.18
633	Beehive Inlet TC ELEV. = 903.90	12" RCP INV IN = 899.39	12" RCP INV OUT = 899.80
634	Beehive Inlet TC ELEV. = 904.30		12" RCP INV OUT = 900.63
636	Curb Inlet TC ELEV. = 903.89	18" RCP INV IN = 897.96	18" RCP INV OUT = 897.86
637	Curb Inlet TC ELEV. = 903.89	18" RCP INV IN = 898.16	18" RCP INV OUT = 898.06
638	Storm Manhole TC ELEV. = 905.70	15" RCP INV IN = 898.63 12" RCP INV IN = 898.88	18" RCP INV OUT = 898.38
639	Curb Inlet TC ELEV. = 903.94	12" RCP INV IN = 899.13	15" RCP INV OUT = 898.88
640	Curb Inlet TC ELEV. = 903.62	12" RCP INV IN = 899.52	12" RCP INV OUT = 899.42
641	Curb Inlet TC ELEV. = 903.62		12" RCP INV OUT = 899.62
643	Curb Inlet TC ELEV. = 904.05	12" RCP INV IN = 899.91	12" RCP INV OUT = 899.81
644	Curb Inlet TC ELEV. = 904.05		12" RCP INV OUT = 900.05
646	End Section TC ELEV. = N/A	12" RCP INV IN = 896.00	
647	Beehive Inlet TC ELEV. = 899.40	12" RCP INV IN = 896.28	12" RCP INV OUT = 896.38
648	Beehive Inlet TC ELEV. = 900.60		12" RCP INV OUT = 897.43

DRAINAGE SUMMARY:

Site Acreage: 17.89 acres
 Offsite Upstream Acreage: 0.36 acres

10-Year Allowable Release Rates: 0.10 cfs per acre
 (18.25 ac) x 0.10 cfs/ac = 1.83 cfs

100-Year Allowable Release Rate: 0.24 cfs per acre
 (18.25 ac + 0.36 ac) x 0.24 cfs/ac = 4.38 cfs

Post Developed 10-Year Release Rate
 Pond 1: 0.91 cfs (detained)
 Direct Runoff (rear of lots 1019-1024): 2.07 cfs (undetained)

Post Developed 100-Year Release Rate
 Pond 1: 1.39 cfs (detained)
 Direct Runoff (rear of lots 1019-1024): 4.39 cfs (undetained)

Volume of Detention Required: 2.29 ac-ft
 Volume of Detention Provided: 2.29 ac-ft

BENCHMARK

TBM #44
 USGS BENCHMARK
 CUT "X" NORTH BONNET BOLT IN FIRE HYDRANT
 EAST SIDE HOOVER RD. ±100' SOUTH OF CLARIDGE
 FARM ENTRANCE.
 ELEVATION - 893.39

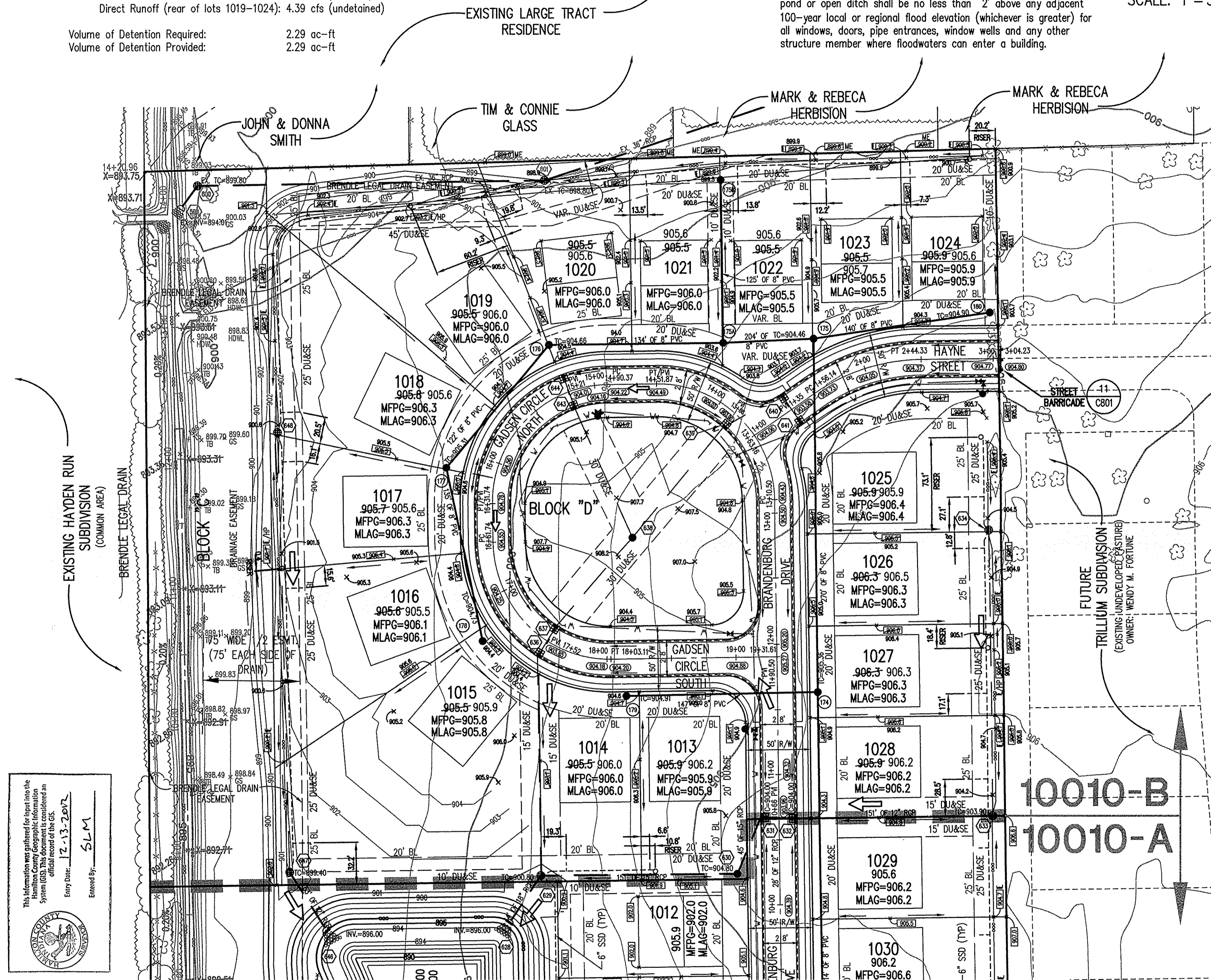
CLAY TOWNSHIP REGIONAL WASTE DISTRICT
 SANITARY SEWER STRUCTURE NUMBER PREFIX:
 WVC-W-000
 (Village of WestClay - WEST - Structure number)



LEGEND

- Existing Storm Sewer
- New Storm Sewer
- Existing Sanitary Sewer
- New Sanitary Sewer
- Existing Contour
- Existing Elevation
- New Pavement Grade
- All Other Finish Grades
- Match Existing Grades
- Storm Structure Number
- Sanitary Structure Number
- Flow Arrow
- 6" Subsurface Drain (w/4" Lateral Connection)
- 4" SSD Lot Lateral
- Swale (S) with Elevation
- Water Main
- Existing Trees
- Existing Gas Main
- Existing Telephone
- Existing Water Main
- Existing Flowline
- Existing Overhead Utilities
- Emergency Flood Routing
- Denotes Elevation and Pad Size of 55'x65'
- MFPG
- Minimum Flood Protection Grade 2' Above 100 Year Flooding Source (Lowest Structure Opening Permitted)
- Section A & B Breakline

ASSUMED NORTH
 SCALE: 1" = 50'



- GENERAL NOTES**
- ALL GRADES AT BOUNDARY SHALL MEET EXISTING GRADES.
 - IT SHALL BE THE RESPONSIBILITY OF EACH CONTRACTOR TO VERIFY ALL EXISTING UTILITIES AND CONDITIONS PERTAINING TO HIS PHASE OF WORK. IT SHALL ALSO BE THE CONTRACTOR'S RESPONSIBILITY TO CONTACT THE OWNERS OF THE VARIOUS UTILITIES FOR PROPER STAKE LOCATIONS FOR EACH UTILITY BEFORE WORK IS STARTED. THE CONTRACTOR SHALL NOTIFY IN WRITING THE OWNER OR THE ENGINEER OF ANY CHANGES, OMISSIONS, OR ERRORS FOUND ON THESE PLANS OR IN THE FIELD BEFORE WORK IS STARTED OR RESUMED.
 - THE SIZE AND LOCATION OF EXISTING UTILITIES SHOWN ARE PER INFORMATION PROVIDED BY THE RESPECTIVE UTILITY COMPANIES. ALL UTILITY COMPANIES SHOULD BE NOTIFIED PRIOR TO ANY EXCAVATION FOR FIELD LOCATION OF SERVICES.
 - CONCRETE SERVICE WALK ACROSS FRONTAGE OF EACH LOT TO BE CONSTRUCTED BY OTHERS.
 - TEMPORARY TRAFFIC CONTROL DURING CONSTRUCTION TO CONFORM TO APPLICABLE LOCAL AND STATE STANDARDS.
 - ALL CONSTRUCTION ACTIVITY ON THIS SITE TO BE PERFORMED IN COMPLIANCE WITH APPLICABLE OSHA STANDARDS FOR WORKER SAFETY.
 - CONTRACTOR SHALL MINIMIZE DAMAGE TO EXISTING TREES.
 - REMOVE AND BACKFILL ALL AREAS WHERE ANY FIELD TILE CROSSES PROPOSED HOUSE PADS. ALL FIELD TILES INTERCEPTED TO BE PERMITTED INTO STORM SEWER SYSTEM OR LAKE. THE SUBCONTRACTOR SHALL NOTIFY IN WRITING THE OWNER AND THE ENGINEER IN ANY CIRCUMSTANCES WHERE THIS CANNOT BE ACCOMPLISHED.
 - ALL FILL AREAS (ENGINEERED FILL) SHALL BE COMPACTED TO AT LEAST 98 PERCENT OF THE STANDARD DRY DENSITY (ASTM D-1557). FILL UNDER THE FOOTING SHALL BE COMPACTED TO AT LEAST 95 PERCENT OF THE MAXIMUM DRY DENSITY (ASTM D-1557). FILL SHOULD EXHIBIT A MAXIMUM DRY DENSITY OF AT LEAST 105 PCF, AND HAVE A LIQUID LIMIT LESS THAN 25% AND PLASTICITY INDEX OF LESS THAN 25. SANDY FILL MUST HAVE LESS THAN 15% FINES PASSING A #200 SIEVE.
 - WATERMAIN VALVES SHALL NOT BE LOCATED UNDER PAVEMENT, SIDEWALK OR CURB.
 - 100 YEAR FLOODPLAINS, FLOODWAY FRINGS AND FLOODWAYS: NONE

FILED
 JAN 25 2012
 OFFICE OF HAMILTON COUNTY SURVEYOR

**STORM SEWER
 WATER LINE
 GRADING
 SANITARY SEWER
 RECORD DRAWING**

NOTE:
 All paving within the existing and proposed city right of way shall conform to the requirements of the Department of Engineering. The contractor shall contact the Department of Engineering to schedule a pre-construction meeting to review the Department's construction requirements, staff notification requirements, required inspections for certain stages of the work and to review the authority of the Department as it relates to work within the existing and proposed right of way.

NOTE:
 Any existing drain tiles encountered on this site during construction shall be crushed within the limits of the project site and if any extend upstream beyond the boundaries of the site shall be intercepted and routed to the storm sewer system or the J.W. Brendle legal drain.

NOTE:
 ALL SWALES TO HAVE 6" DIAMETER DOUBLE WALL HI-Q SUBSURFACE DRAIN. SEE DETAIL, SHEET C802.

NOTE:
 NO EARTH DISTURBING ACTIVITY MAY COMMENCE WITHOUT AN APPROVED STORM WATER MANAGEMENT PERMIT.

NOTE:
 IF IT WILL BE NECESSARY TO RELOCATE EXISTING UTILITIES, THE EXPENSE OF SUCH RELOCATION SHALL BE THE RESPONSIBILITY OF THE DEVELOPER. ALL UTILITY POLES SHALL BE LOCATED WITHIN ONE FOOT OF THE PROPOSED RIGHT-OF-WAY.

NOTE:
 ALL SWALES DEPICTED TO HAVE A MINIMUM FLOWLINE SLOPE OF 1.0 % UNLESS OTHERWISE NOTED.

NOTE:
 STORM SEWER CASTINGS TO BE LABELED "DUMP NO WASTE - DRAINS TO WATERWAY"

NOTE:
 NO KNOWN EXISTING PUBLIC WATER SYSTEMS WITHIN 50' OF PROPOSED SANITARY SEWERS.
 NO F.E.M.A. OR D.N.R. MAPPED 100 YEAR FLOODWAY OR FLOODPLAIN PER HAMILTON COUNTY, IN, MAP NUMBER 18057C0206F.

CERTIFICATION FOR "RECORD DRAWING"

CERTIFIED BY: DUANE A. SHARRER

THE SCHNEIDER CORPORATION
 8901 OTIS AVENUE
 INDIANAPOLIS, IN 46216
 (317) 826-7100 FAX (317) 826-7200

NOTE:
 Record drawing certification only for horizontal locations of Storm Sewers, Sanitary Sewers, Water Lines, Hydrants, Water Valves, Sub-surface Drain connections and Grading.

DATE: 01/23/2012

REVISIONS:
 1. 07/19/2010
 2. 08/02/2010
 3. 08/02/2010
 4. 08/02/2010
 5. 08/02/2010
 6. 08/02/2010
 7. 08/02/2010
 8. 08/02/2010
 9. 08/02/2010
 10. 08/02/2010
 11. 08/02/2010
 12. 08/02/2010

THIS DRAWING AND THE IDEAS, DESIGNS AND CONCEPTS CONTAINED HEREIN ARE THE EXCLUSIVE INTELLECTUAL PROPERTY OF THE SCHNEIDER CORPORATION AND ARE NOT TO BE USED OR REPRODUCED, IN WHOLE OR IN PART, WITHOUT THE WRITTEN CONSENT OF THE SCHNEIDER CORPORATION.

DATE: 07/19/2010
 PROJECT NO.: 1238.1010A
 DRAWN BY: DCC
 CHECKED BY: DKS
 SHEET TITLE: DEVELOPMENT PLAN

Schneider

THE SCHNEIDER CORPORATION
 Historic Fort Harrison
 8901 Otis Avenue
 Indianapolis, IN 46216-1037
 Telephone: 317.826.7100
 Fax: 317.826.7300
 www.schneidercorp.com

Architecture
 Civil Engineering
 Environmental Engineering
 Geotechnical Services
 GIS * LIS
 Home Builder Services
 Interior Design
 Land Surveying
 Landscape Architecture
 Transportation Engineering

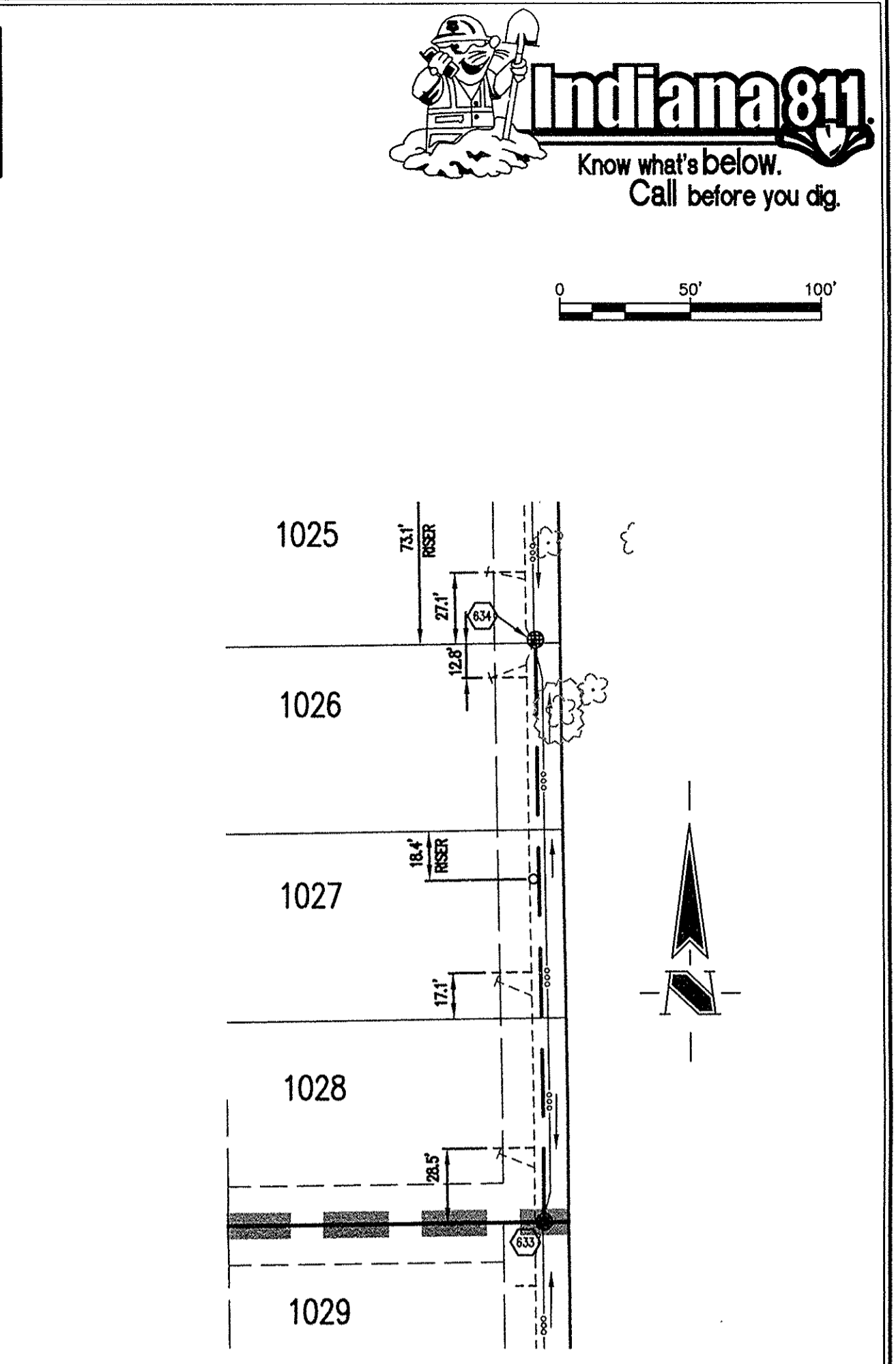
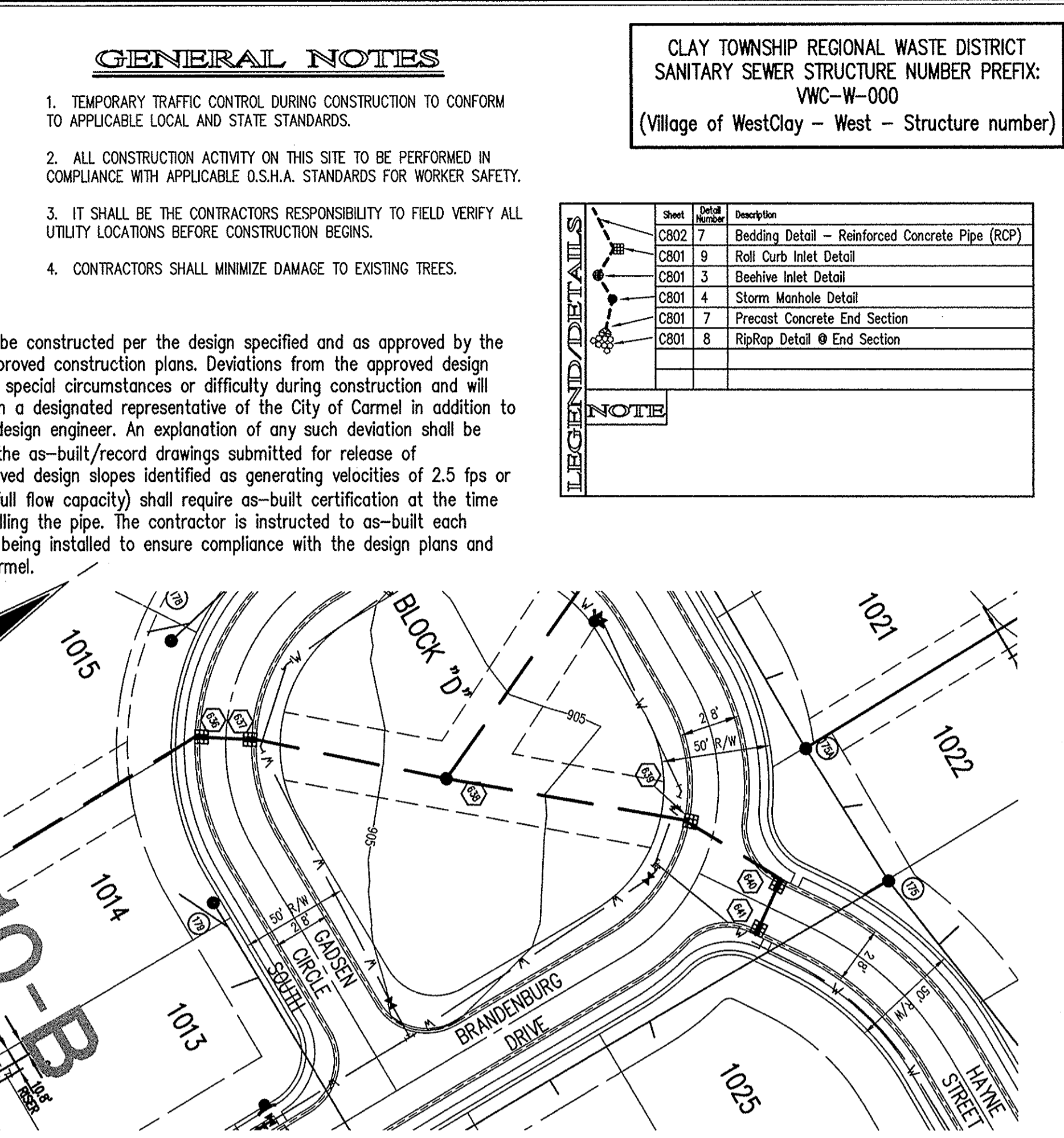
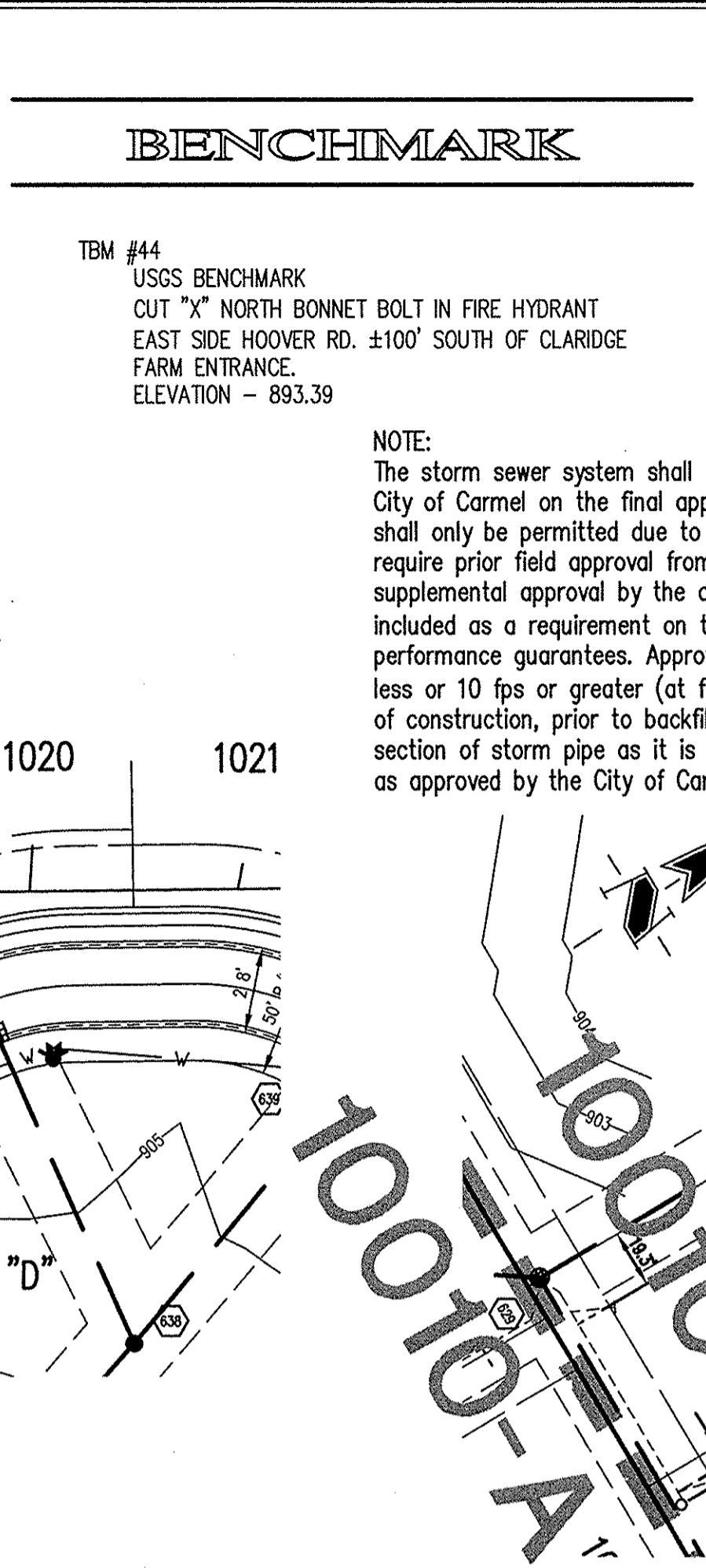
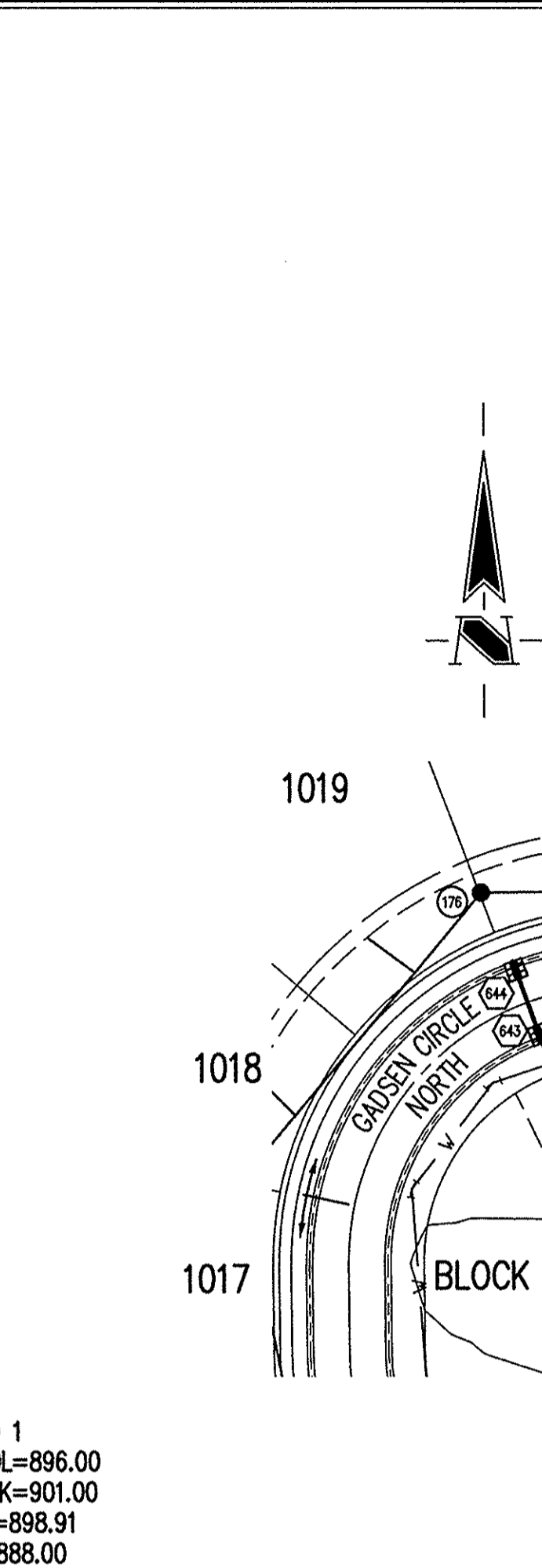
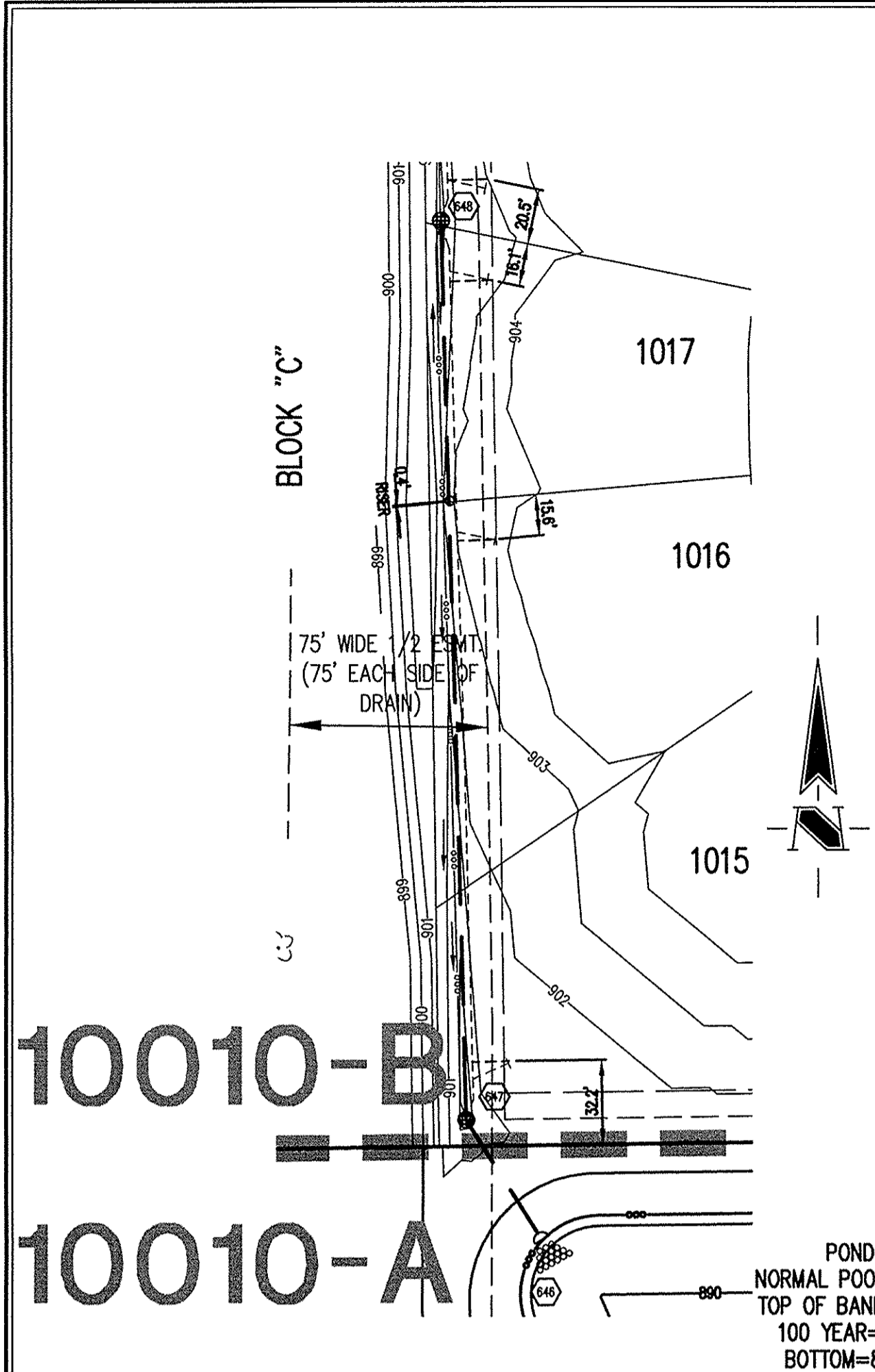
Village of WestClay
 SECTIONS 10010-A & 10010-B
 CARMEL, INDIANA
 PULTE HOMES OF INDIANA, LLC
 11590 N. MERIDIAN ST. SUITE 500, INDIANAPOLIS, IN 46032

DATE: 07/19/2010 PROJECT NO.: 1238.1010A
 DRAWN BY: DCC CHECKED BY: DKS
 SHEET TITLE: DEVELOPMENT PLAN

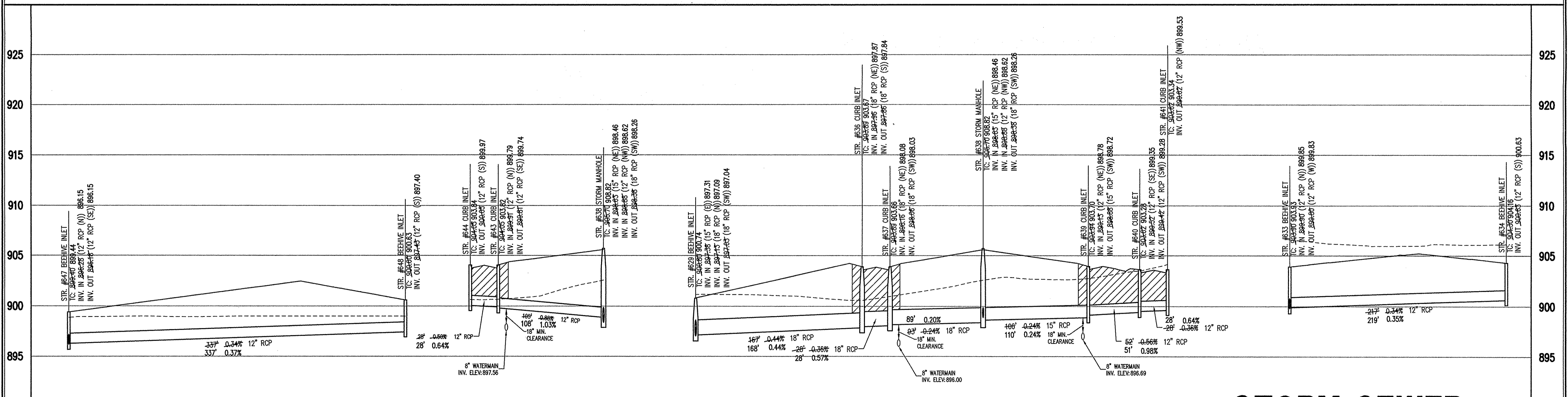
DRAWING FILES:
 1: \\VA\228\1010A\Map\C101-C102.dwg
 2: \\VA\228\1010A\Map\Title.dwg
 3: \\VA\228\1010A\Map\10010-A.dwg
 4: \\VA\228\1010A\Map\10010-B.dwg
 5: \\VA\228\1010A\Map\10010-C.dwg
 6: \\VA\228\1010A\Map\10010-D.dwg
 7: \\VA\228\1010A\Map\10010-E.dwg
 8: \\VA\228\1010A\Map\10010-F.dwg

SHEET NO.: C102

Plot Date: Jan 23, 2012 Plot Time: 3:56pm File Name: T:\1\1238\1010A.dwg\c604 Civil 3D.dwg, Layout: C604 By: dcc



STORM SEWER PLAN



648-647
HORIZ. 1" = 50'
VERT. 1" = 5'

644-638
HORIZ. 1" = 50'
VERT. 1" = 5'

CERTIFICATION FOR "RECORD DRAWING"

CERTIFIED BY: DUANE A. SHARRER
 SCHNEIDER ENGINEERING CORPORATION
 HISTORIC FORT HARRISON
 8901 OTIS AVENUE
 INDIANAPOLIS, INDIANA 46216
 (317) 828-7100 FAX (317) 826-7300

NOTE:
 Record drawing certification only for top of casting, invert elevations and lengths of pipe. Slope percentage represents a calculated figure and is for general information only.

STORM SEWER RECORD DRAWING

FILED

JAN 25 2012

OFFICE OF HAMILTON COUNTY SURVEYOR

641-629
HORIZ. 1" = 50'
VERT. 1" = 5'

634-633
HORIZ. 1" = 50'
VERT. 1" = 5'

This information was gathered for input into the Hamilton County Geographic Information System (GIS). This document is considered an official record of the GIS.

Entry Date: 12-13-2012
 Entered By: SLN

DUANE A. SHARRER
 No. 890258
 STATE OF INDIANA
 PROFESSIONAL ENGINEER

DATE: 01/23/2012

STORM SEWER RECORD DRAWING

FILED

JAN 25 2012

OFFICE OF HAMILTON COUNTY SURVEYOR

STORM SEWER PROFILE

LEGEND

Existing Grade New Grade Granular Backfill

GENERAL NOTES

- TEMPORARY TRAFFIC CONTROL DURING CONSTRUCTION TO CONFORM TO APPLICABLE LOCAL AND STATE STANDARDS.
- ALL CONSTRUCTION ACTIVITY ON THIS SITE TO BE PERFORMED IN COMPLIANCE WITH APPLICABLE O.S.H.A. STANDARDS FOR WORKER SAFETY.
- IT SHALL BE THE CONTRACTORS RESPONSIBILITY TO FIELD VERIFY ALL UTILITY LOCATIONS BEFORE CONSTRUCTION BEGINS.
- CONTRACTORS SHALL MINIMIZE DAMAGE TO EXISTING TREES.

BENCHMARK

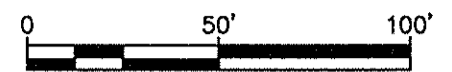
TBM #44
 USGS BENCHMARK
 CUT "X" NORTH BONNET BOLT IN FIRE HYDRANT
 EAST SIDE HOOVER RD. ±100' SOUTH OF CLARIDGE
 FARM ENTRANCE.
 ELEVATION - 893.39

NOTE:
 The storm sewer system shall be constructed per the design specified and as approved by the City of Carmel on the final approved construction plans. Deviations from the approved design shall only be permitted due to special circumstances or difficulty during construction and will require prior field approval from a designated representative of the City of Carmel in addition to supplemental approval by the design engineer. An explanation of any such deviation shall be included as a requirement on the as-built/record drawings submitted for release of performance guarantees. Approved design slopes identified as generating velocities of 2.5 fps or less or 10 fps or greater (at full flow capacity) shall require as-built certification at the time of construction, prior to backfilling the pipe. The contractor is instructed to as-built each section of storm pipe as it is being installed to ensure compliance with the design plans and as approved by the City of Carmel.

CLAY TOWNSHIP REGIONAL WASTE DISTRICT
 SANITARY SEWER STRUCTURE NUMBER PREFIX:
 VWC-W-000
 (Village of WestClay - West - Structure number)

LEGEND/DETAILS

Sheet	Detail	Description
CB02	7	Bedding Detail - Reinforced Concrete Pipe (RCP)
CB01	9	Roll Curb Inlet Detail
CB01	3	Beehive Inlet Detail
CB01	4	Storm Manhole Detail
CB01	7	Precast Concrete End Section
CB01	8	Rip/Rip Detail @ End Section



REVISIONS:
 1. REVISED PER THIS DRAWING
 2. DOC. 06/22/2010 REVISED PER IAC COMMENTS
 3. DOC. 07/19/2010 "RECORD DRAWING"

DATE: 07/19/2010
 THIS DRAWING AND THE IDEAS, DESIGNS AND CONCEPTS CONTAINED HEREIN ARE THE EXCLUSIVE INTELLECTUAL PROPERTY OF THE SCHNEIDER CORPORATION AND ARE NOT TO BE USED OR REPRODUCED, IN WHOLE OR IN PART, WITHOUT THE WRITTEN CONSENT OF THE SCHNEIDER CORPORATION.
 © COPYRIGHTED BY THE SCHNEIDER CORP. (2010)

Schneider

THE SCHNEIDER CORPORATION
 Historic Fort Harrison
 8901 Otis Avenue
 Indianapolis, IN 46216-1037
 Telephone: 317.826.7100
 Fax: 317.826.7300
 www.schneidercorp.com

Architecture
 Civil Engineering
 Environmental Engineering
 Geotechnical Services
 GIS * LIS
 Home Builder Services
 Interior Design
 Land Surveying
 Landscape Architecture
 Transportation Engineering

Village of WestClay
 SECTIONS 10010-A & 10010-B
 CARMEL, INDIANA

PULTE HOMES OF INDIANA, LLC
 11590 N. MERIDIAN ST. SUITE 500, INDIANAPOLIS, IN 46032

DATE: 07/19/2010 PROJECT NO.: 1238.1010A
 DRAWN BY: DCC CHECKED BY: DKS
 SHEET TITLE: STORM SEWER PLAN AND PROFILES
 DRAWING FILES:
 T:\1\1238\1010A.dwg\0201-0204 CH 3D.dwg
 T:\1\1238\1010A.dwg\TITLE.dwg
 T:\1\1238\1010A.dwg\1010-01-02.dwg
 T:\1\1238\1010A.dwg\1010-03-04.dwg
 T:\1\1238\1010A.dwg\1010-05-06.dwg
 T:\1\1238\1010A.dwg\1010-07-08.dwg
 T:\1\1238\1010A.dwg\1010-09-10.dwg
 T:\1\1238\1010A.dwg\1010-11-12.dwg
 T:\1\1238\1010A.dwg\1010-13-14.dwg
 T:\1\1238\1010A.dwg\1010-15-16.dwg
 T:\1\1238\1010A.dwg\1010-17-18.dwg
 T:\1\1238\1010A.dwg\1010-19-20.dwg
 T:\1\1238\1010A.dwg\1010-21-22.dwg
 T:\1\1238\1010A.dwg\1010-23-24.dwg
 T:\1\1238\1010A.dwg\1010-25-26.dwg
 T:\1\1238\1010A.dwg\1010-27-28.dwg
 T:\1\1238\1010A.dwg\1010-29-30.dwg
 T:\1\1238\1010A.dwg\1010-31-32.dwg
 T:\1\1238\1010A.dwg\1010-33-34.dwg
 T:\1\1238\1010A.dwg\1010-35-36.dwg
 T:\1\1238\1010A.dwg\1010-37-38.dwg
 T:\1\1238\1010A.dwg\1010-39-40.dwg
 T:\1\1238\1010A.dwg\1010-41-42.dwg
 T:\1\1238\1010A.dwg\1010-43-44.dwg
 T:\1\1238\1010A.dwg\1010-45-46.dwg
 T:\1\1238\1010A.dwg\1010-47-48.dwg
 T:\1\1238\1010A.dwg\1010-49-50.dwg
 T:\1\1238\1010A.dwg\1010-51-52.dwg
 T:\1\1238\1010A.dwg\1010-53-54.dwg
 T:\1\1238\1010A.dwg\1010-55-56.dwg
 T:\1\1238\1010A.dwg\1010-57-58.dwg
 T:\1\1238\1010A.dwg\1010-59-60.dwg
 T:\1\1238\1010A.dwg\1010-61-62.dwg
 T:\1\1238\1010A.dwg\1010-63-64.dwg
 T:\1\1238\1010A.dwg\1010-65-66.dwg
 T:\1\1238\1010A.dwg\1010-67-68.dwg
 T:\1\1238\1010A.dwg\1010-69-70.dwg
 T:\1\1238\1010A.dwg\1010-71-72.dwg
 T:\1\1238\1010A.dwg\1010-73-74.dwg
 T:\1\1238\1010A.dwg\1010-75-76.dwg
 T:\1\1238\1010A.dwg\1010-77-78.dwg
 T:\1\1238\1010A.dwg\1010-79-80.dwg
 T:\1\1238\1010A.dwg\1010-81-82.dwg
 T:\1\1238\1010A.dwg\1010-83-84.dwg
 T:\1\1238\1010A.dwg\1010-85-86.dwg
 T:\1\1238\1010A.dwg\1010-87-88.dwg
 T:\1\1238\1010A.dwg\1010-89-90.dwg
 T:\1\1238\1010A.dwg\1010-91-92.dwg
 T:\1\1238\1010A.dwg\1010-93-94.dwg
 T:\1\1238\1010A.dwg\1010-95-96.dwg
 T:\1\1238\1010A.dwg\1010-97-98.dwg
 T:\1\1238\1010A.dwg\1010-99-100.dwg
 SHEET NO.: C604